

PART NUMBER

SSR-107-47/54



BEFORE YOU BEGIN

PRIMARY APPLICATIONS

- > Ford E-350 Club Wagon 4 X 2
(2002 - 2005)
- > Ford E-350 Econoline Club Wagon 4 X 2
(2001 - 2002)
- > Ford E-350 Super Duty 4 X 2
(2001 - 2011)
- > Ford E-450 Econoline Super Duty 4 X 2
(2001 - 2002)
- > Ford E-450 Super Duty 4 X 2
(2003 - 2011)

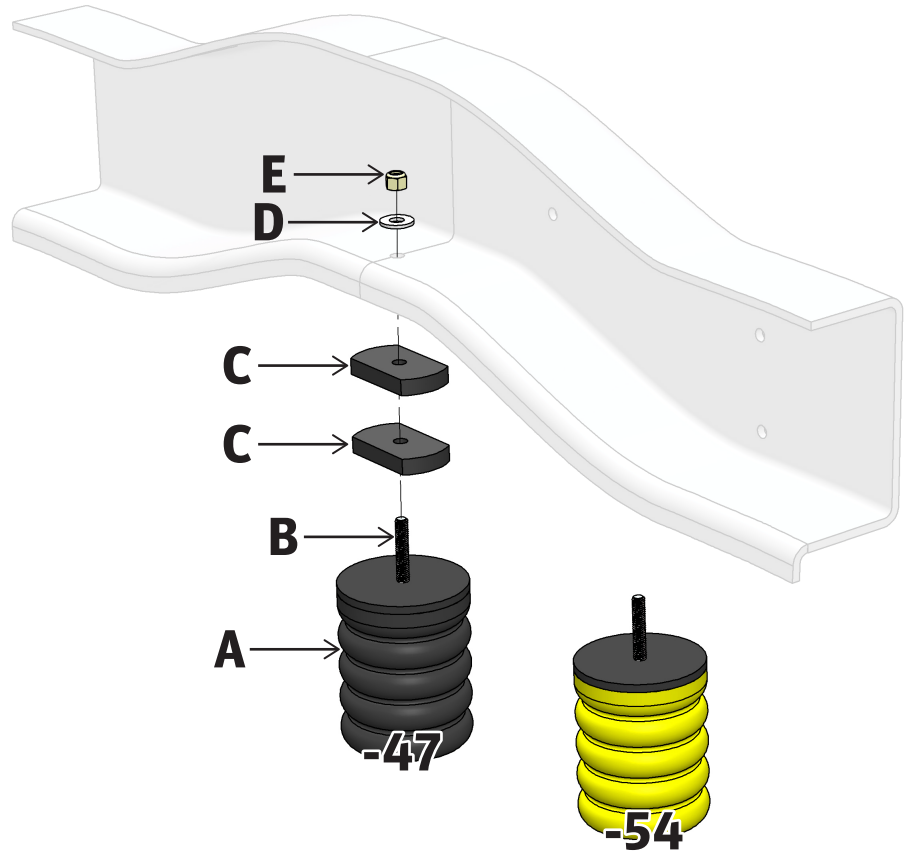
PARTS LIST

Item	Part #	Description	QTY
A	511421-38	SumoSprings Black -47	2
	511404-38	SumoSprings Yellow -54	
B	512257-2.5	3/8-16 x 2 1/2" Stud*	2
C	512126	1/2" Spacer	4
D	512244	5/16 Flat Washer	2
E	512323	3/8-16 Nylock Nut	2

*PREINSTALLED IN THE SUMOSPRING. DO NOT REMOVE

TOOLS REQUIRED

- > Floor Jack
- > Jack Stands
- > Wheel Chocks



DRIVER SIDE (PASSENGER SIDE SIMILAR)

Part Number: SSR-107-47/54

Product Line: SUMOSPRINGS REAR

Page 1

Questions or Concerns?

Scan here:



or visit:
superspringsinternational.com

SAFETY NOTICE: We recommend installation be done by a professional or persons with sound mechanical knowledge.

WARNING: These instructions are a general guide for installation. SuperSprings International (SSI) assumes no liability for the actual installation process. Consumers and installers should apply common automotive safety practices when raising and working on any vehicle. **Do not put yourself in a position where, if the vehicle were to move unexpectedly, you may be injured.** SSI's products are designed to improve vehicle ride quality. Do not load any vehicle beyond the manufacturer's specifications.

Never exceed the manufacturer's Gross Vehicle Rating (GVWR) located on your vehicles identification tag.

BEFORE INSTALLATION: Ensure the vehicle is on a hard level surface, the parking brake is ON, with the ignition OFF, and place chocks in front of and behind the tires to prevent the vehicle from moving.

DURING AND/OR AFTER INSTALLATION: Ensure emergency brake cables are not touching the SSI products. Secure any cables out of the way with zip ties or by re-routing. Ensure all A/C lines, brake cables, and frame are clear of contact or interference.

REV. 2.02 | SEP 2023

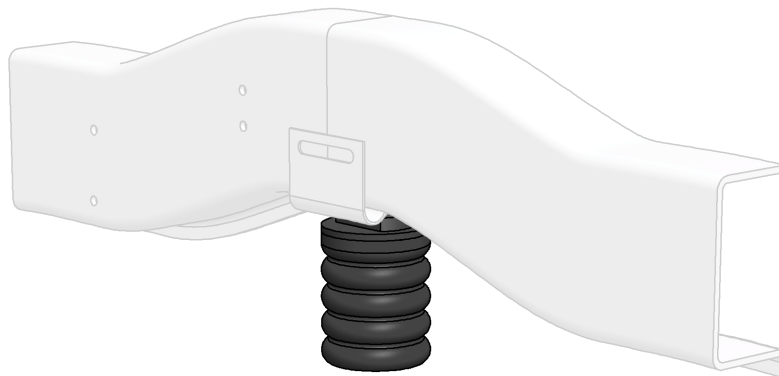
PART NUMBER

SSR-107-47/54



INSTALLATION

1. Park vehicle on level hard surface. Engage emergency brake. Place chocks in front and behind the front wheels to prevent rolling. Observe all safety precautions and wear safety glasses.
2. Raise rear of vehicle allowing the axle to hang freely. Support the frame using safety jack stands.
3. Starting on the driver side, remove the existing factory bump stop assembly from the frame.
4. Place two of the 1/2" Spacers [ITEM C] on the Stud [ITEM B], lining up the flat sides.
5. Insert the stud on the end of the SumoSpring [ITEM B] into the hole in the frame where the factory bump stop was located. Be sure to line up the flat sides of the spacers to clear the frame properly.
6. Install the 5/16 Flat Washer [ITEM D] and 3/8-16 Nylock Nut [ITEM E] on top of the stud and tighten securely.
7. Repeat steps 3 through 6 on the passenger side of the vehicle.
8. Jack up vehicle, remove safety jack stands.
9. Carefully lower vehicle to the hard surface. Remove the chocks in front and back of the front wheels.
10. Register the warranty for your SuperSprings International part. A warranty card can be found in the box your part came in.



Part Number: SSR-107-47/54

Product Line: SUMOSPRINGS REAR

Page 2

Questions or Concerns?

Scan here:



or visit:
superspringsinternational.com

SAFETY NOTICE: We recommend installation be done by a professional or persons with sound mechanical knowledge.

WARNING: These instructions are a general guide for installation. SuperSprings International (SSI) assumes no liability for the actual installation process. Consumers and installers should apply common automotive safety practices when raising and working on any vehicle. **Do not put yourself in a position where, if the vehicle were to move unexpectedly, you may be injured.** SSI's products are designed to improve vehicle ride quality. Do not load any vehicle beyond the manufacturer's specifications.

Never exceed the manufacturer's Gross Vehicle Rating (GVWR) located on your vehicles identification tag.

BEFORE INSTALLATION: Ensure the vehicle is on a hard level surface, the parking brake is ON, with the ignition OFF, and place chocks in front of and behind the tires to prevent the vehicle from moving.

DURING AND/OR AFTER INSTALLATION: Ensure emergency brake cables are not touching the SSI products. Secure any cables out of the way with zip ties or by re-routing. Ensure all A/C lines, brake cables, and frame are clear of contact or interference.

REV. 2.02 | SEP 2023